



MULTIMODAL ACCESSIBILITY: CONCEPTS, APPLICATIONS, AND BEST PRACTICES

NCAMPO 2016 Conference: Innovations in Transportation

May 12, 2016

Alex Bell

Jeremy Goldstein



RENAISSANCE
PLANNING

PRESENTATION OVERVIEW

1 WHAT ACCESSIBILITY IS

2 WHY ACCESSIBILITY MATTERS

3 HOW ACCESSIBILITY IS MEASURED

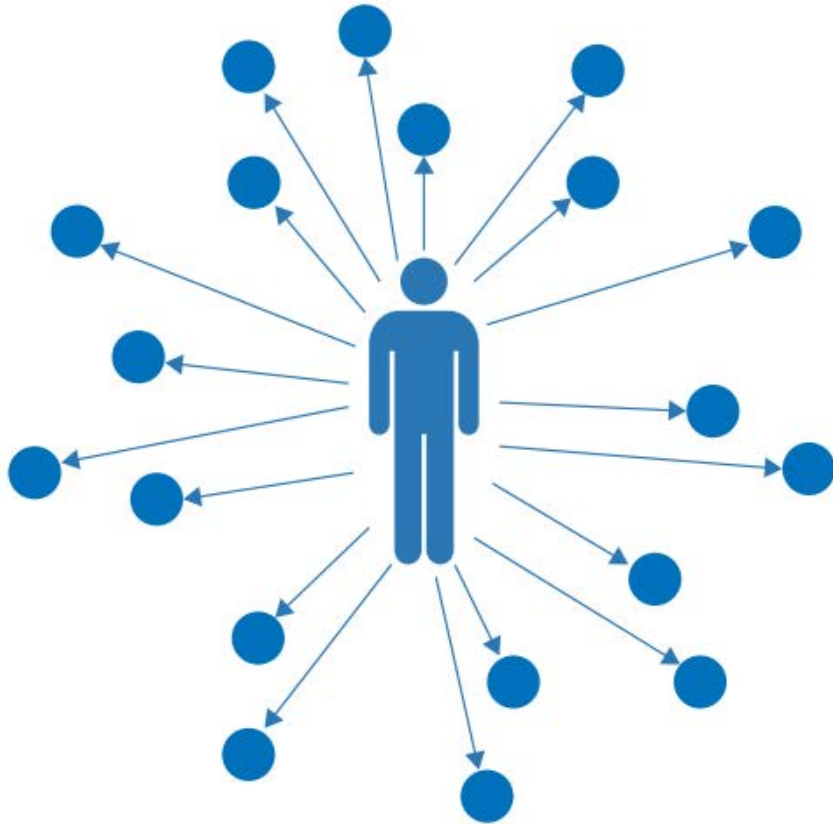
4 HOW ACCESSIBILITY MEASURES ARE BEING USED

5 HOW TO GET STARTED

1

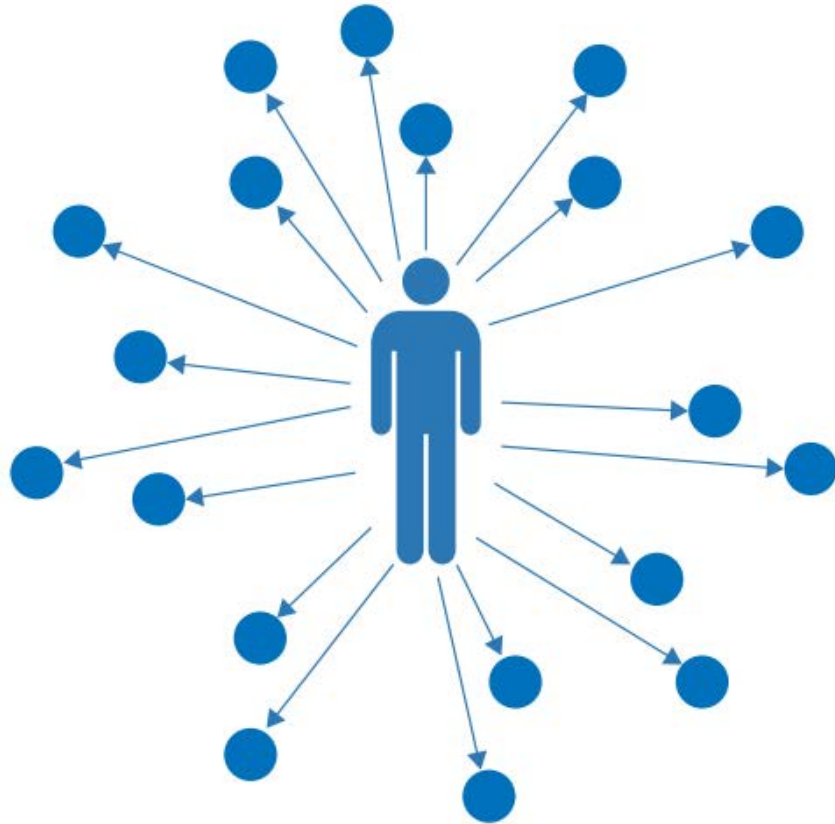
WHAT ACCESSIBILITY IS

ACCESSIBILITY IS A SIMPLE CONCEPT



We all have important destinations to get to in our daily life. Accessibility is our ability to get those destinations.

ACCESSIBILITY IS A POWERFUL TOOL



Power in simplicity – based on destinations and options for getting there

Multi-modal comparisons are natural.

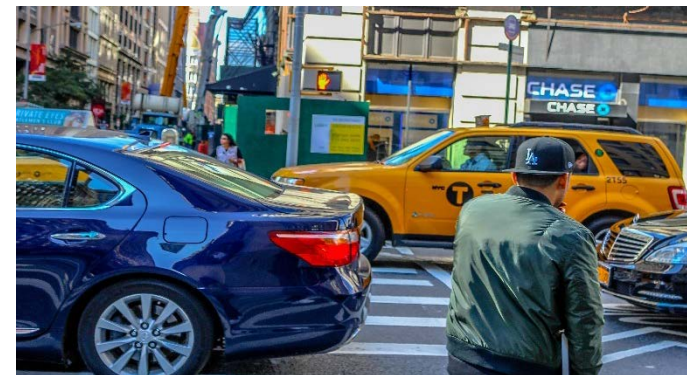
EASE OF REACHING DESTINATIONS

- Opportunities can be...
 - Jobs
 - Schools
 - Restaurants, coffee shops and nightlife
 - Essential goods and services, such as grocers and clinics



EASE OF REACHING DESTINATIONS

- Measure of opportunities within reach that varies by...
 - mode and purpose of travel
 - demographics and lifestyle
 - time of day
 - etc.



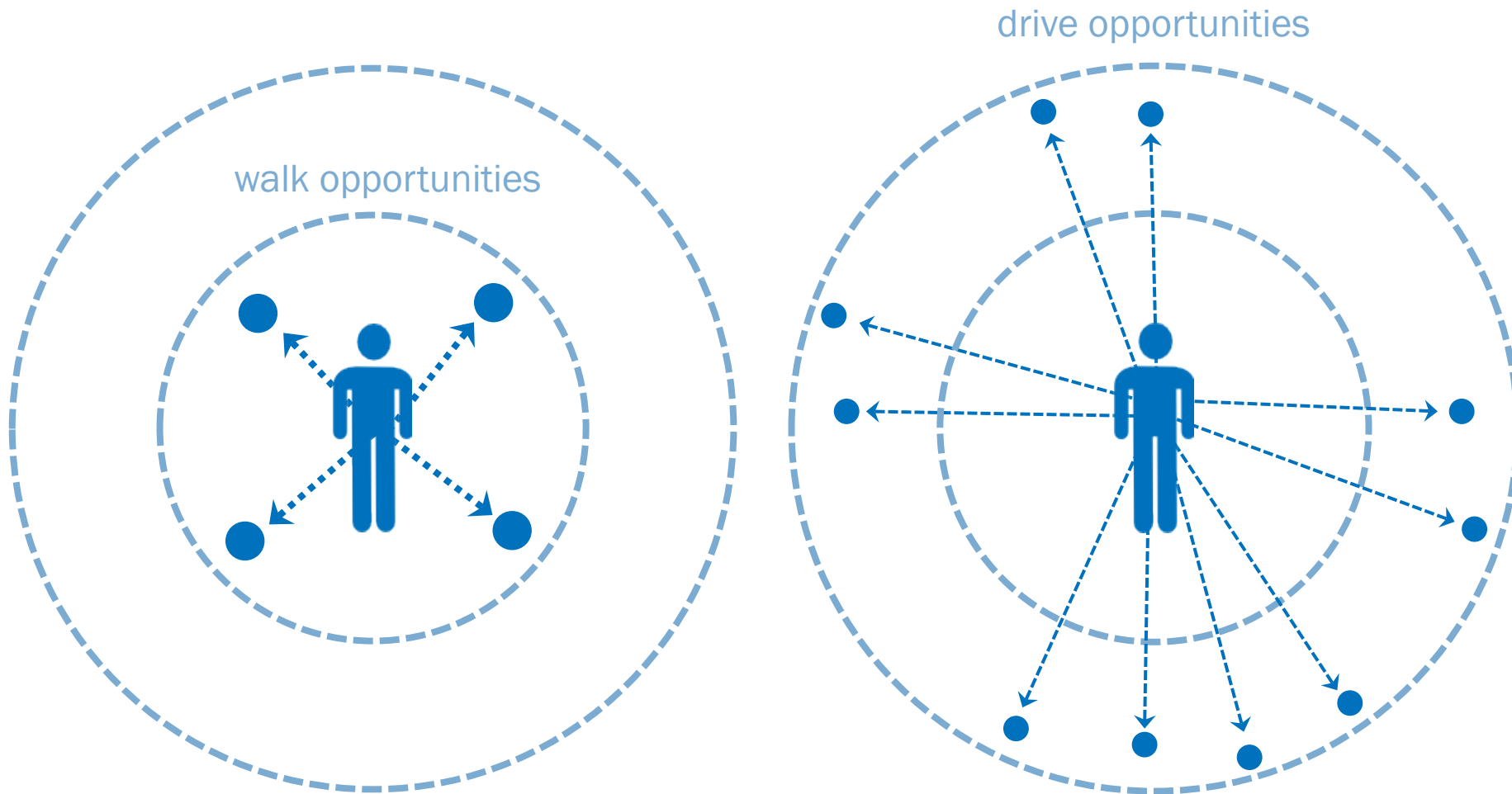
2

WHY ACCESSIBILITY MATTERS

WHY ARE WE TALKING ABOUT ACCESSIBILITY?

- Accessibility influences and responds to...
 - Travel behavior
 - Transportation infrastructure, technology, and policy
 - Urban development

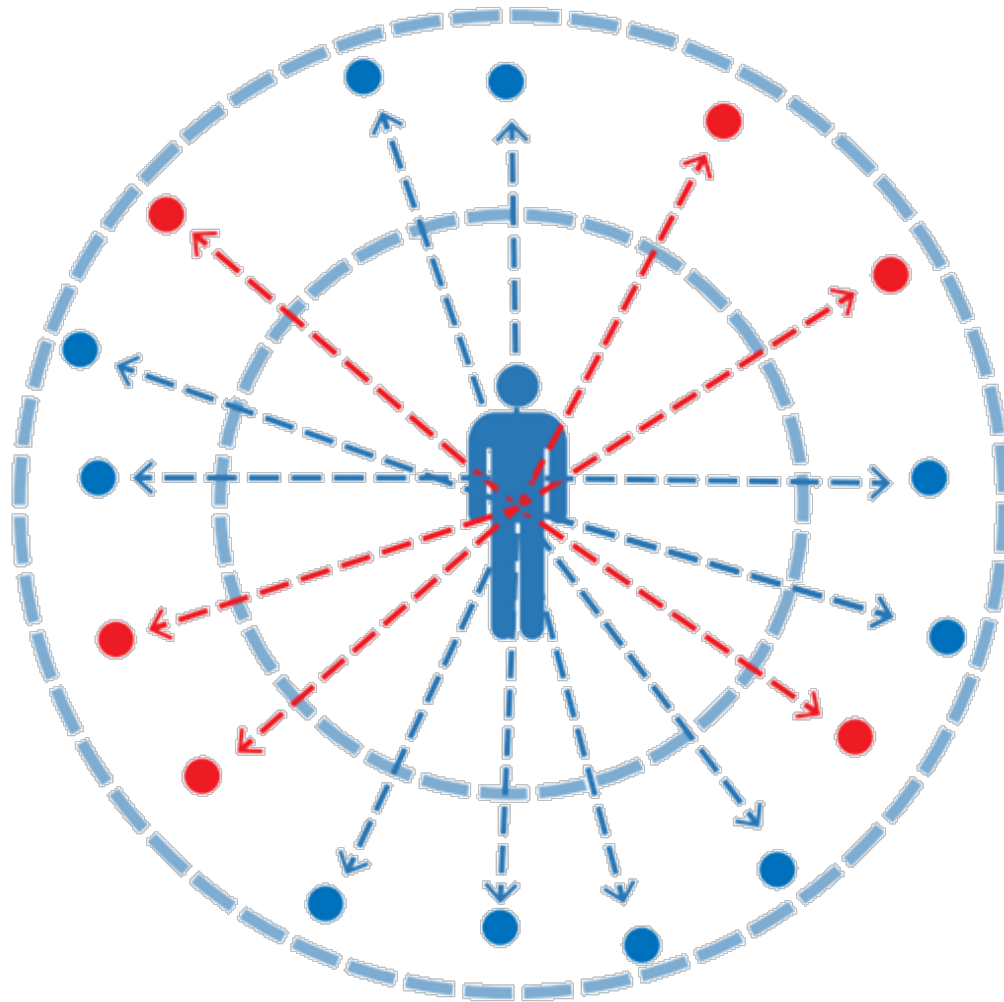
HOW DOES ACCESSIBILITY INTERACT WITH TRAVEL BEHAVIOR?



**Accessibility
measures
travel
possibilities.**

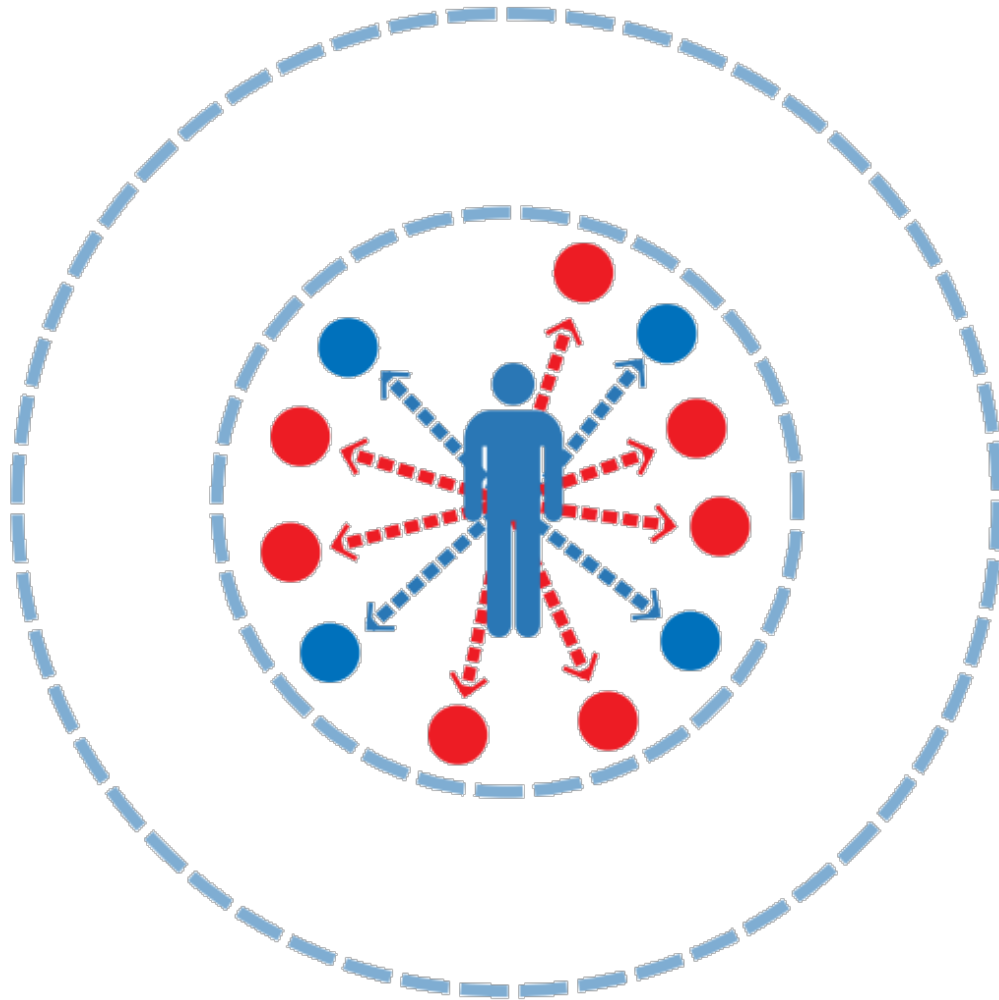
**Travel
possibilities
inform travel
decisions.**

HOW DOES ACCESSIBILITY INTERACT WITH TRANSPORTATION SYSTEMS?



Transportation systems provide connectivity and mobility that enhance accessibility

HOW DOES ACCESSIBILITY INTERACT WITH DEVELOPMENT?

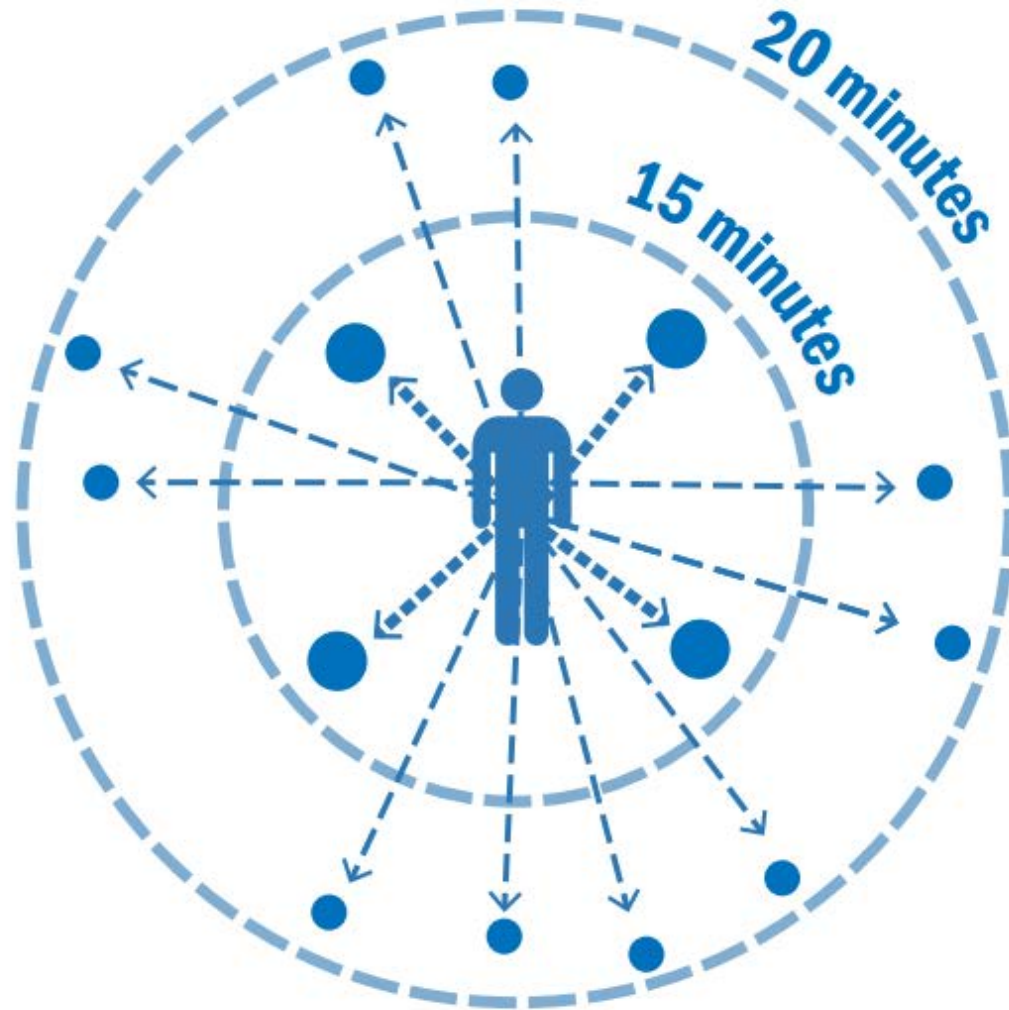


**Developments
bring
opportunities
closer together
to enhance
accessibility**

3

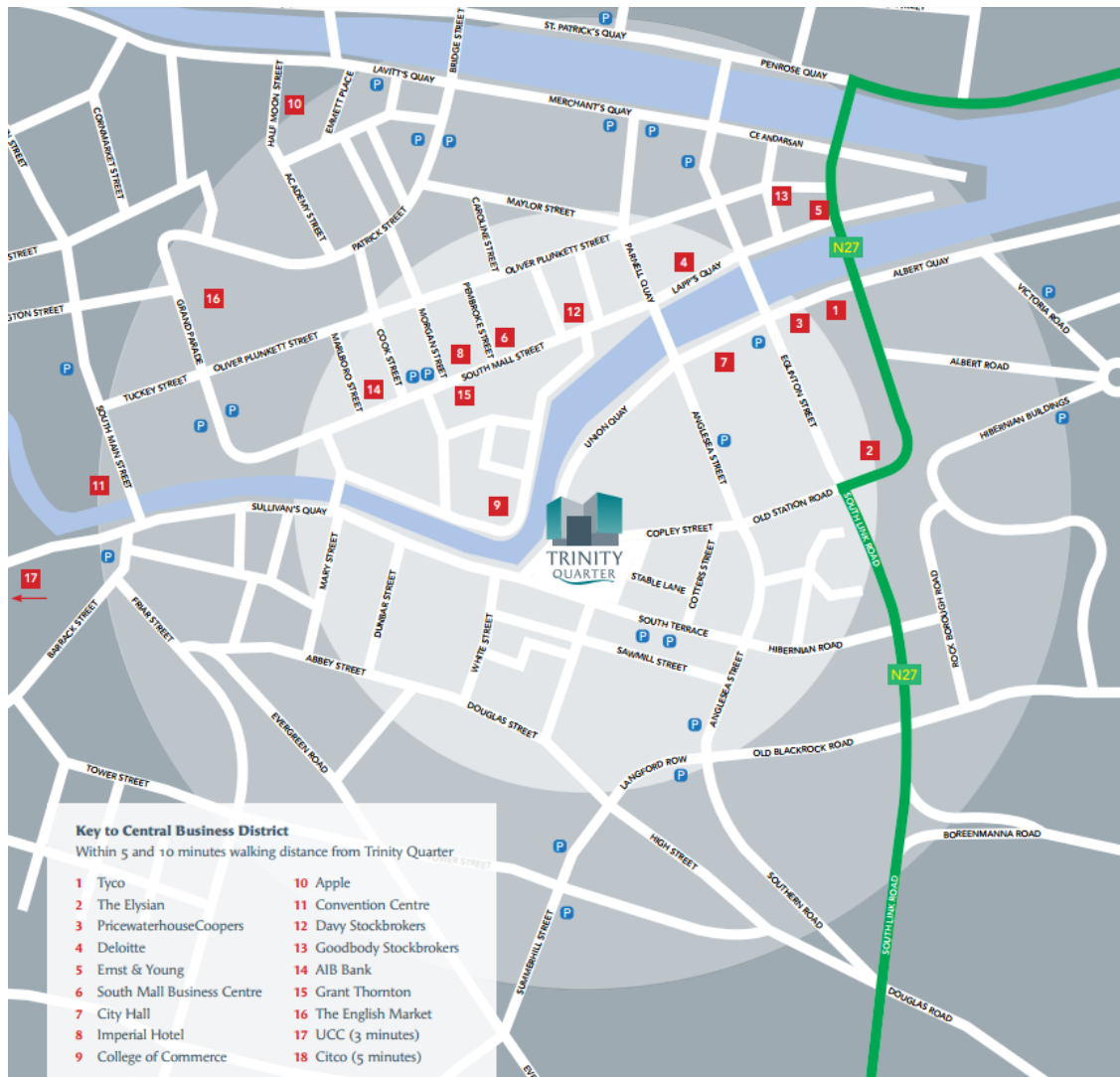
HOW ACCESSIBILITY IS MEASURED

HOW IS ACCESSIBILITY MEASURED?



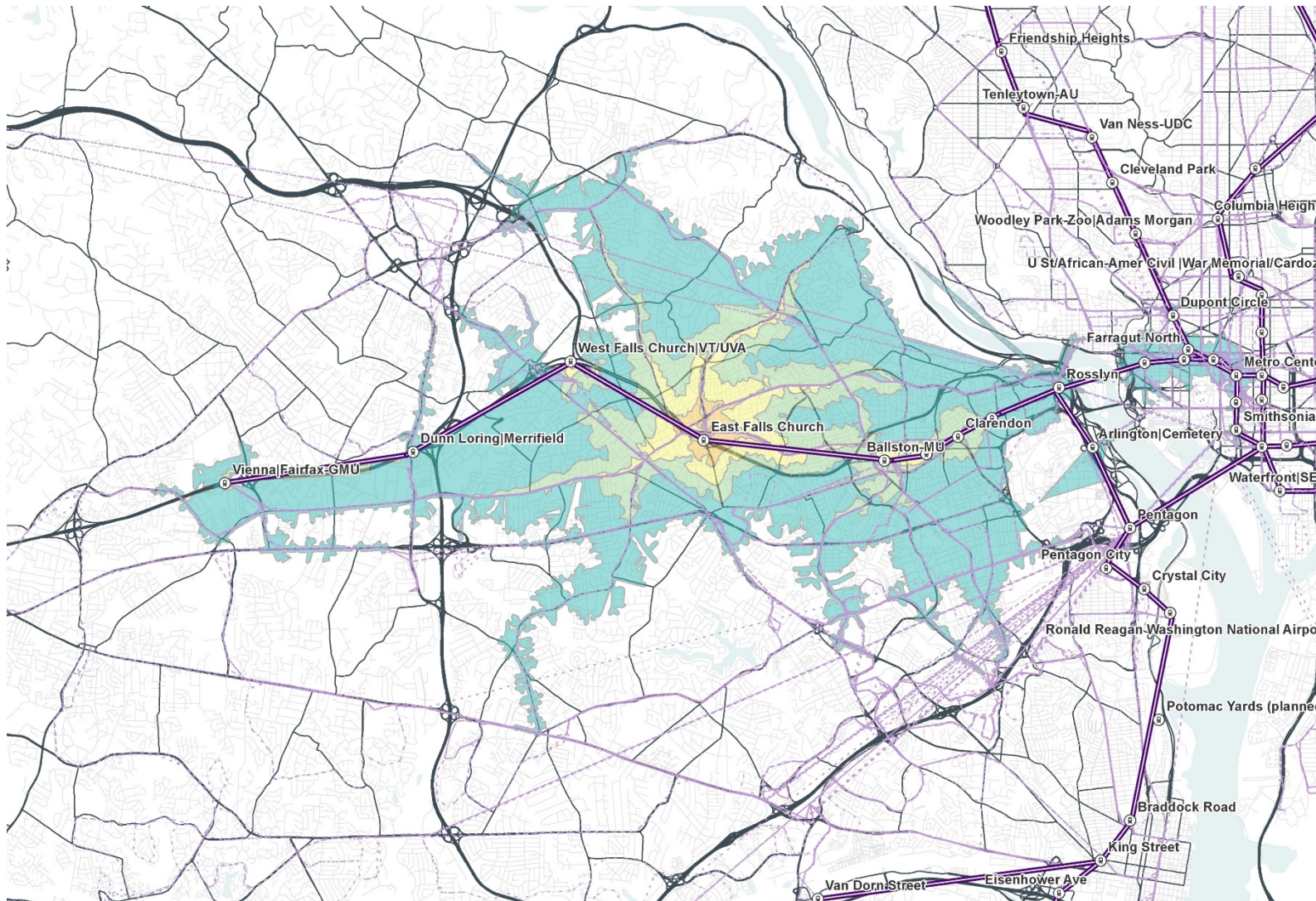
Accessibility is measured as the number of destinations reachable in a given travel time.

HOW IS ACCESSIBILITY MEASURED?



Accessibility measures
can be very simple

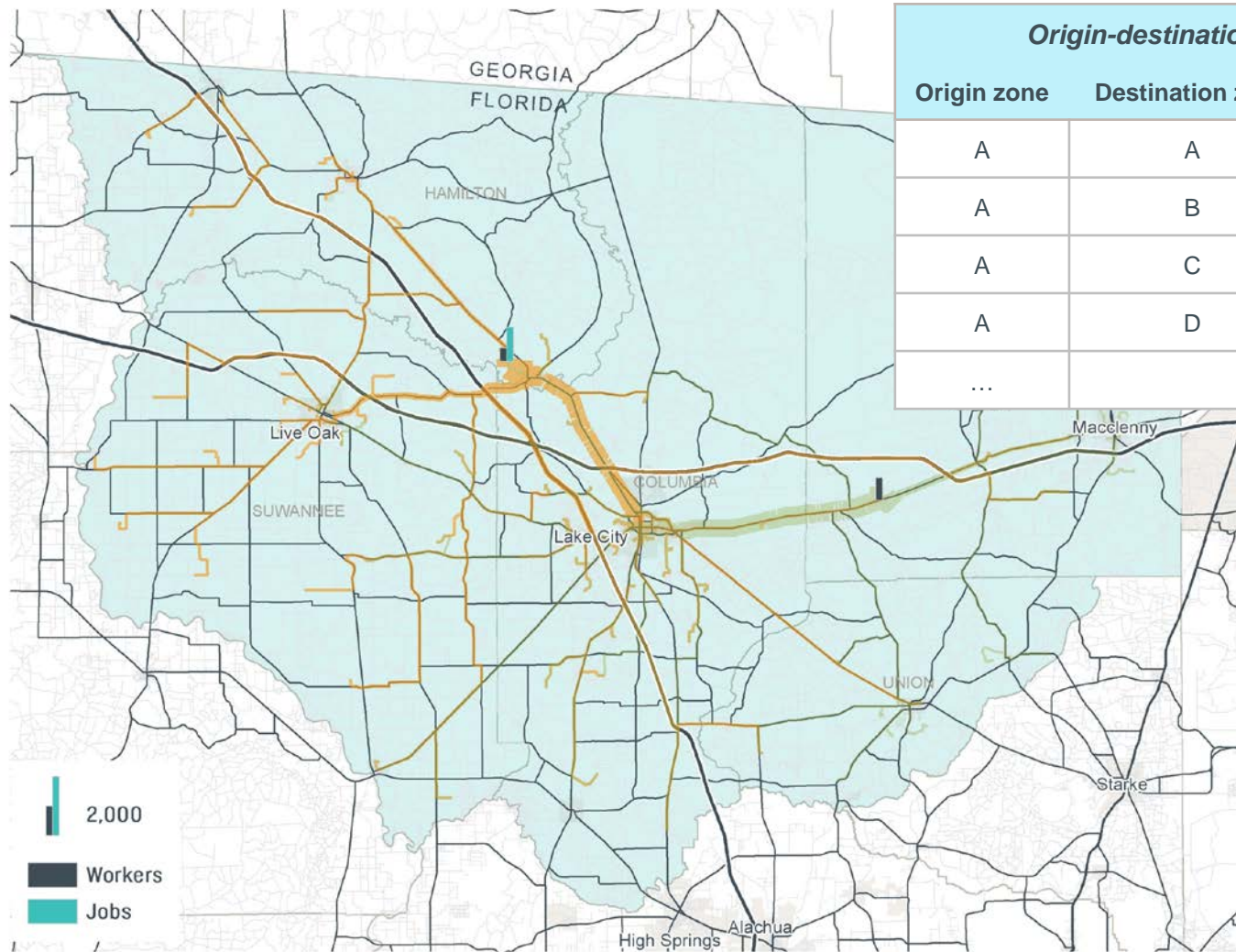
HOW IS ACCESSIBILITY MEASURED?



...or increasingly complex

Network-based buffers

HOW IS ACCESSIBILITY MEASURED?



Origin-destination matrix		
Origin zone	Destination zone	Time
A	A	-
A	B	5.181
A	C	13.780
A	D	19.903
...		

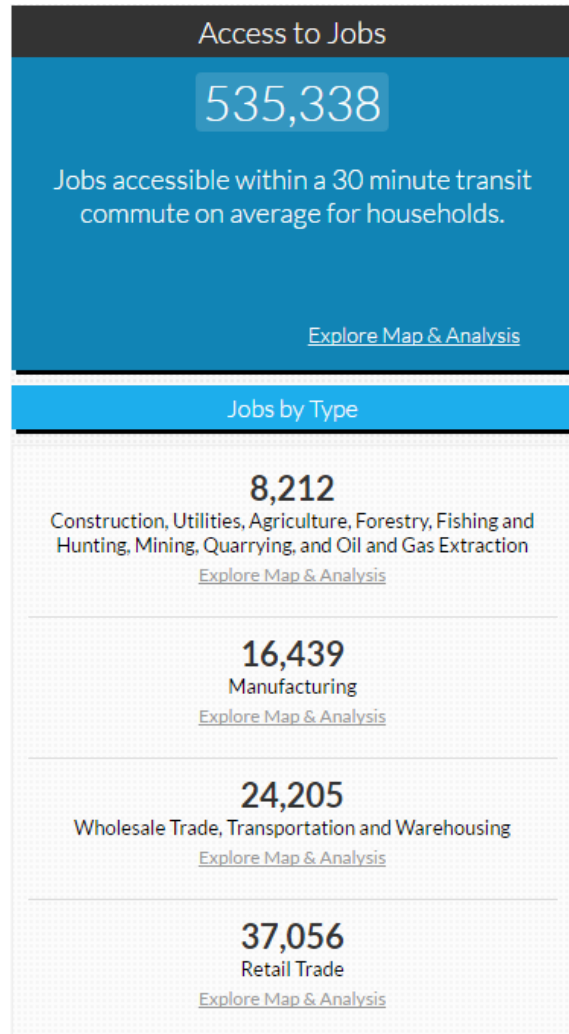
...or increasingly complex

Discrete travel times (O-D matrix)

HOW IS ACCESSIBILITY MEASURED?



walkscore.com



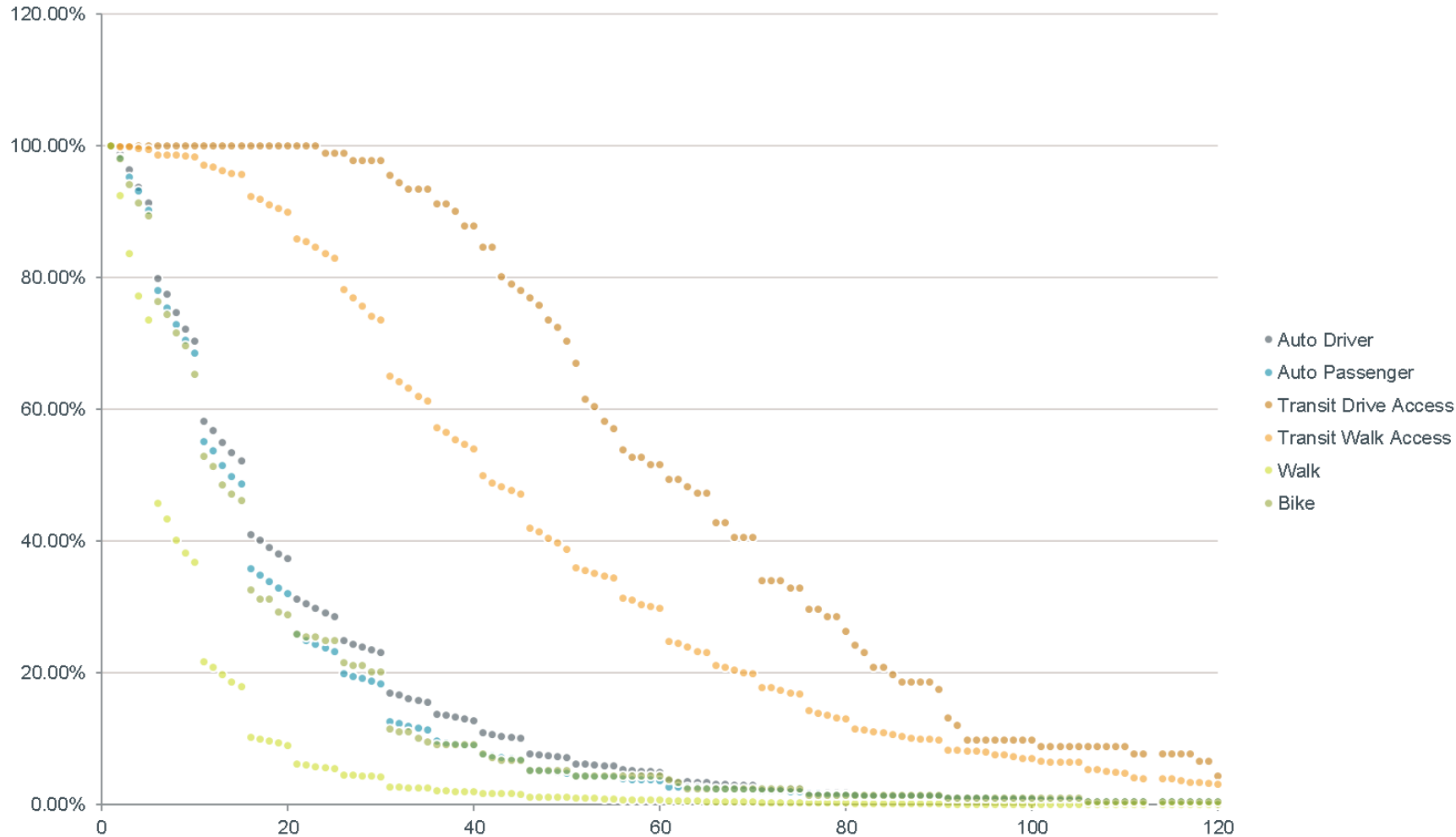
alltransit.cnt.org

...or increasingly complex

Opportunities can be weighted by type

HOW IS ACCESSIBILITY MEASURED?

TRAVEL TIME DECAY BY MODE



...or increasingly complex

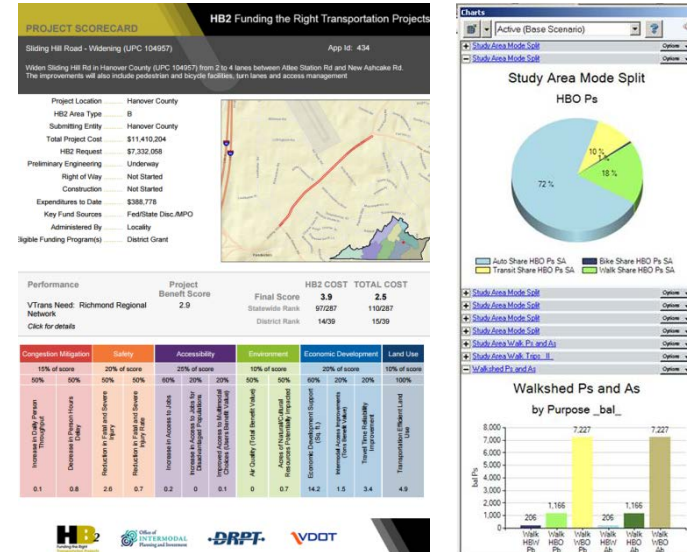
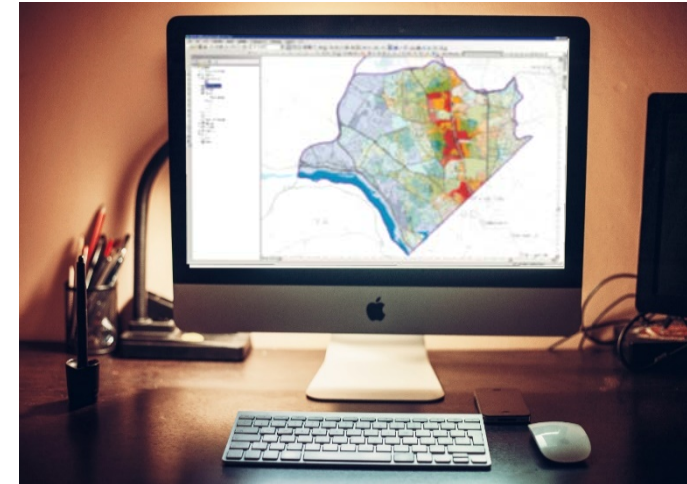
Opportunities can be weighted by cost (time, distance, etc.)

4

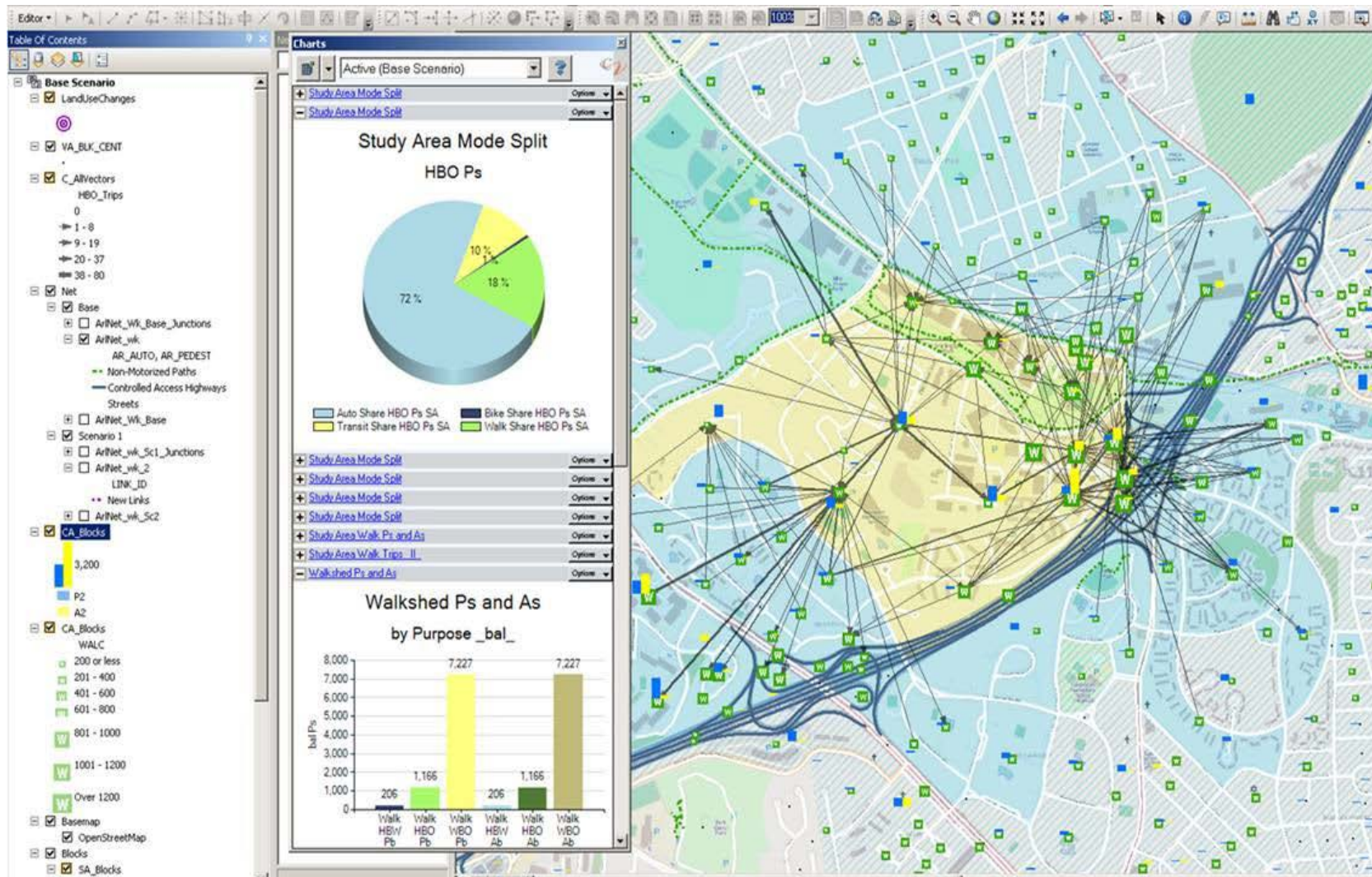
HOW ACCESSIBILITY MEASURES ARE BEING USED

HOW ARE ACCESSIBILITY MEASURES BEING USED?

- Analysis of travel behavior
- Project alternatives and prioritization
- Equity analysis
- Multimodal placemaking
- Others

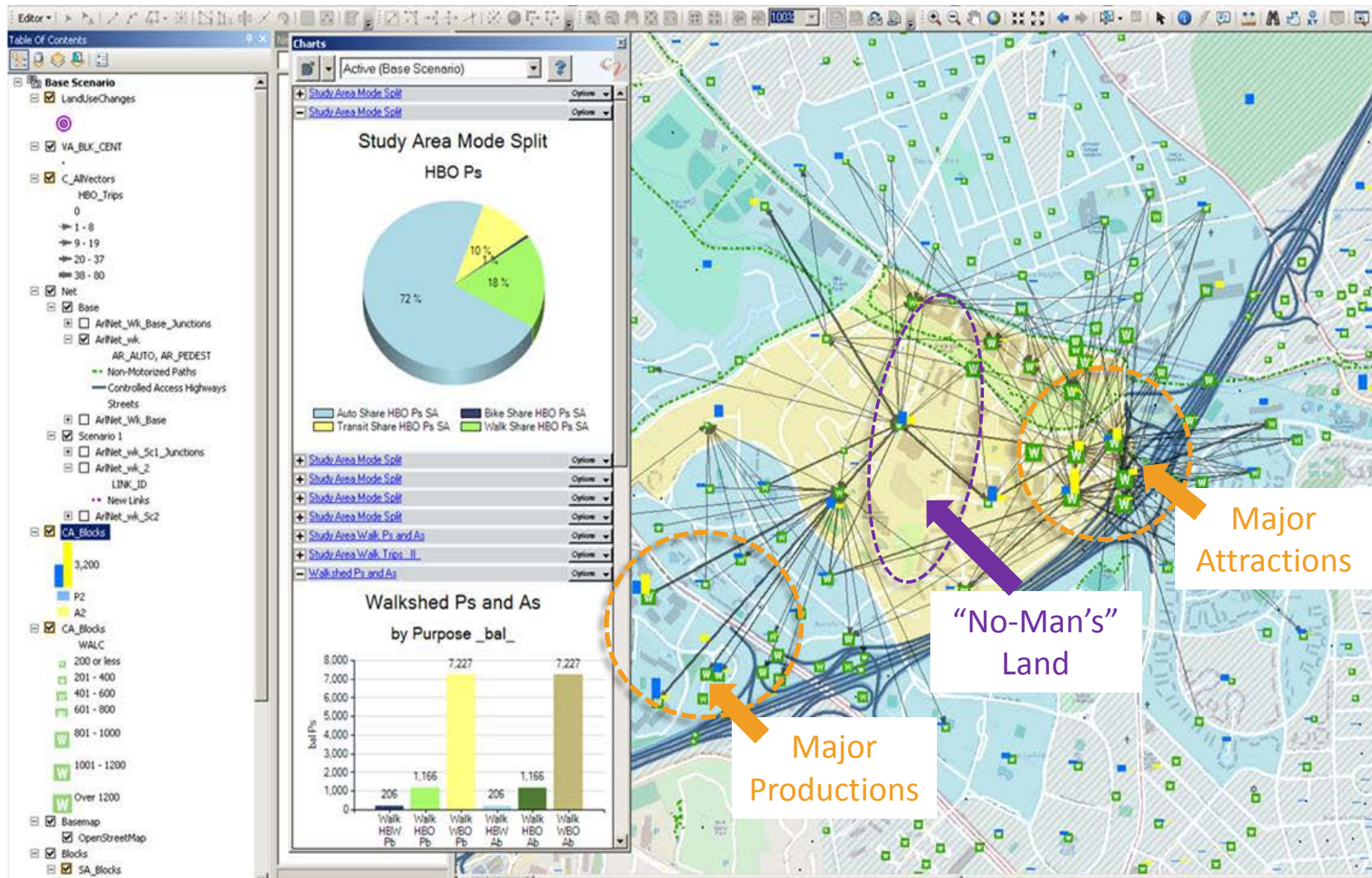


ANALYSIS OF TRAVEL BEHAVIOR – NCHRP REPORT 770



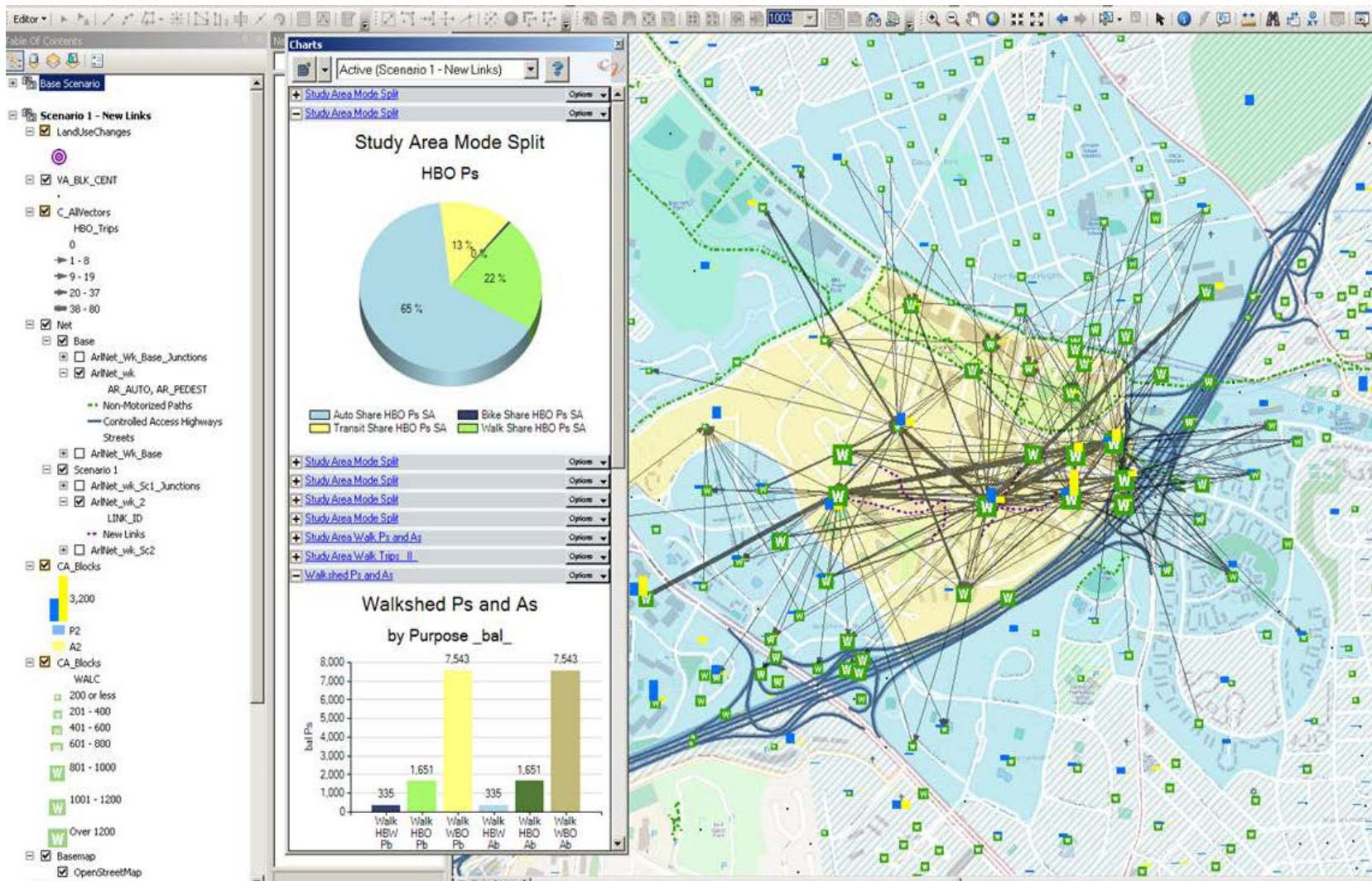
Pedestrian travel modeled using walk accessibility

ANALYSIS OF TRAVEL BEHAVIOR – NCHRP REPORT 770



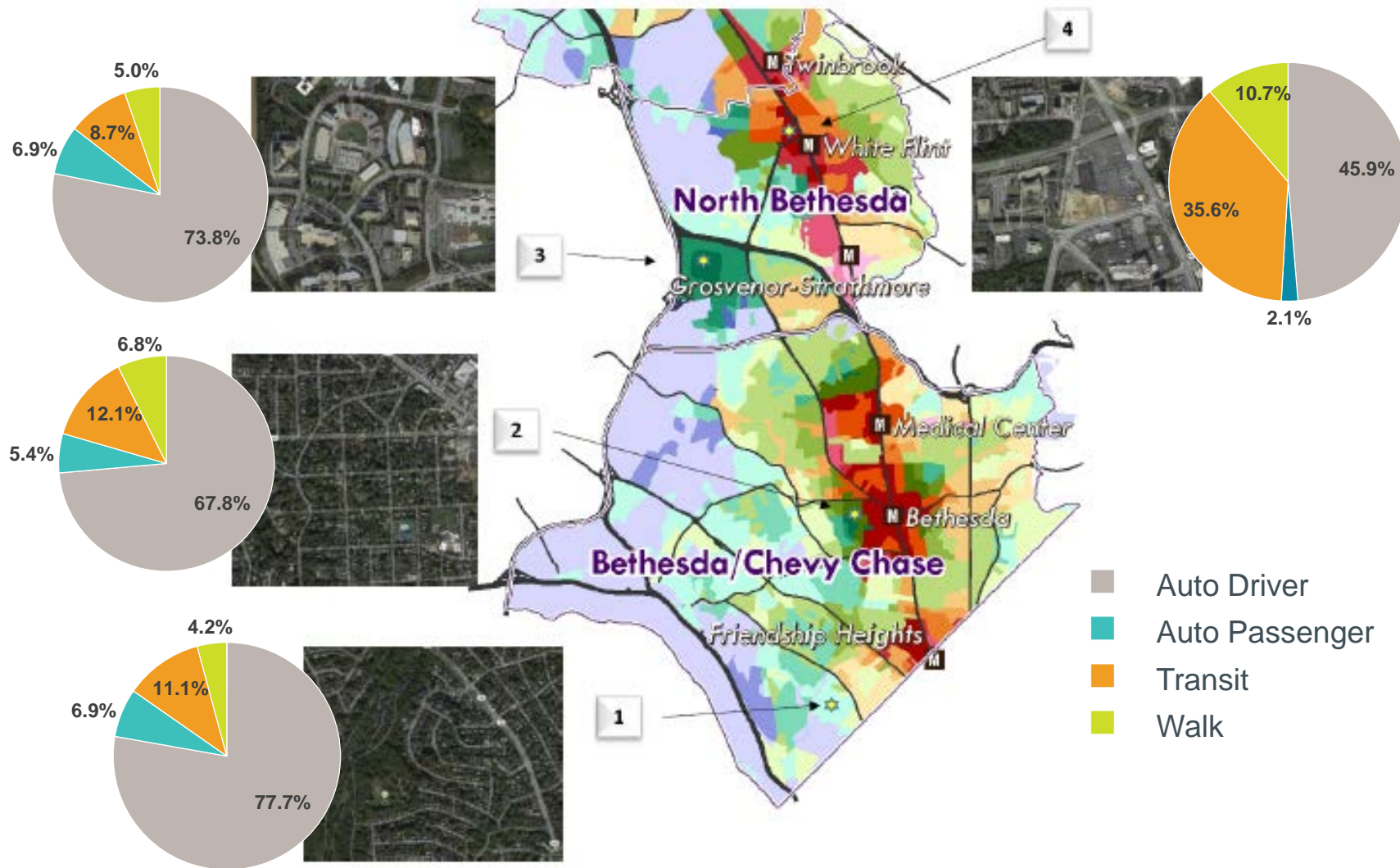
Pedestrian travel modeled using walk accessibility

ANALYSIS OF TRAVEL BEHAVIOR – NCHRP REPORT 770



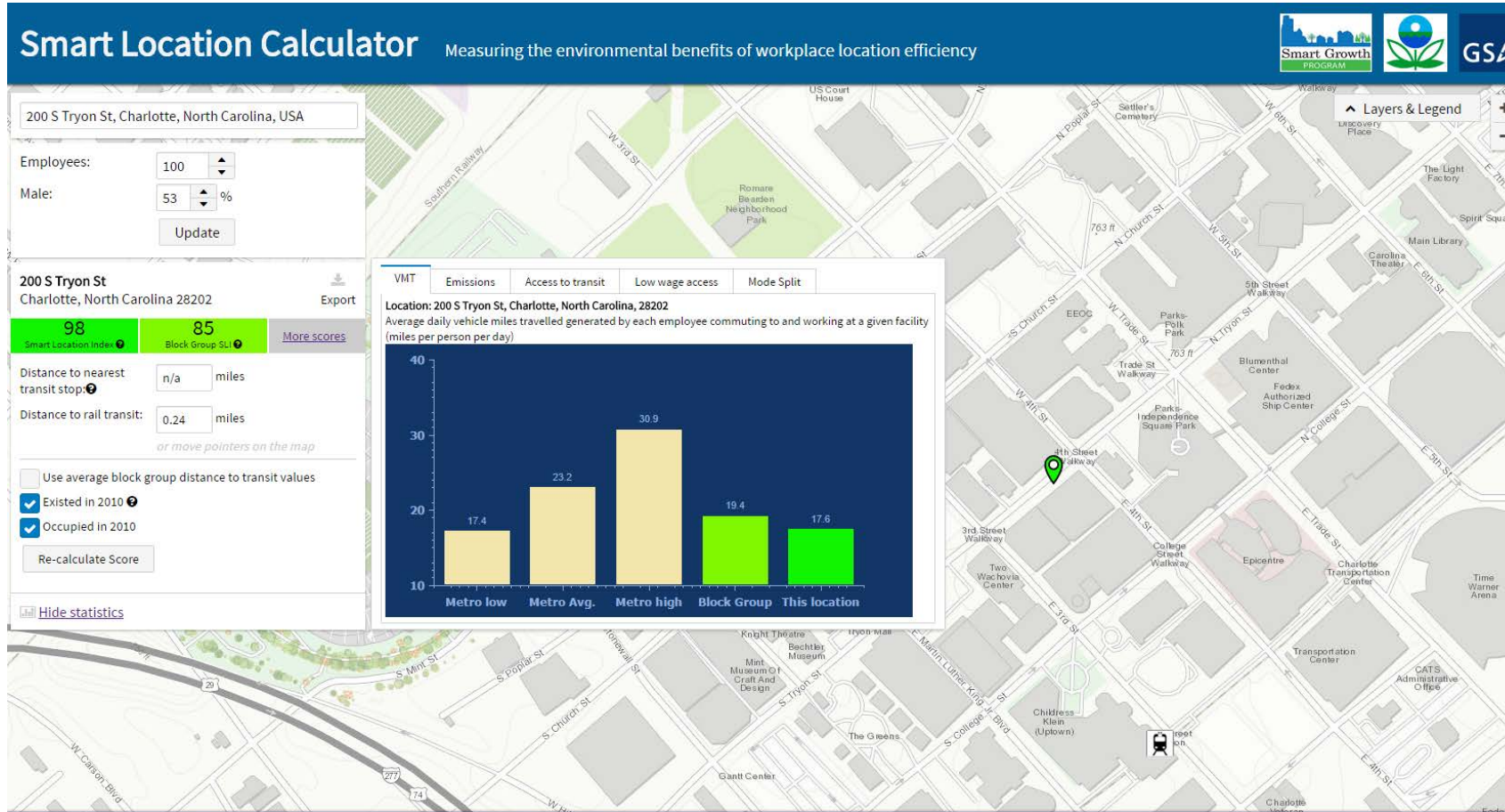
Pedestrian travel modeled using walk accessibility

ANALYSIS OF TRAVEL BEHAVIOR – MARYLAND DOT



Mode choice estimated using combined accessibility scores

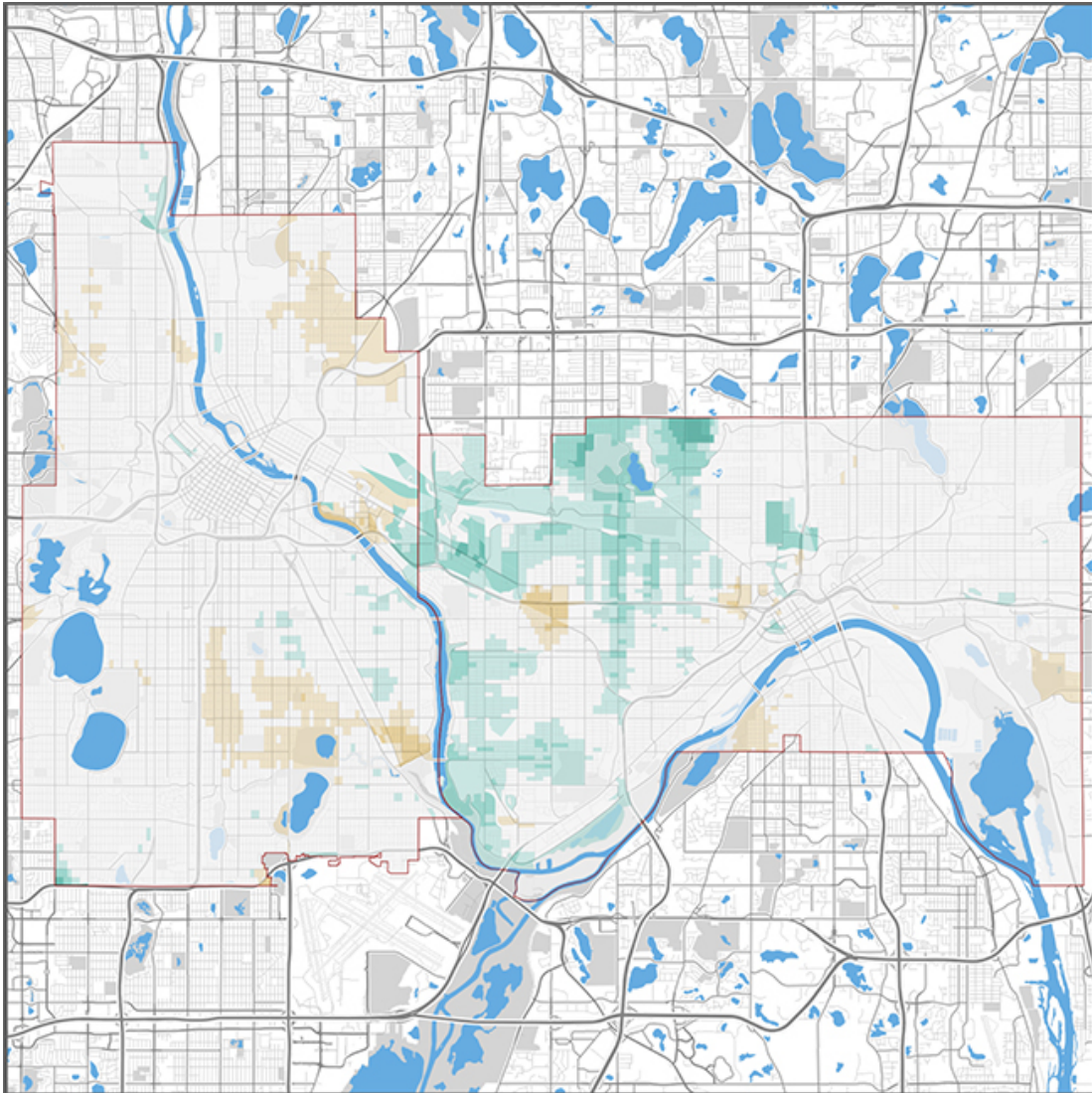
ANALYSIS OF TRAVEL BEHAVIOR - VMT



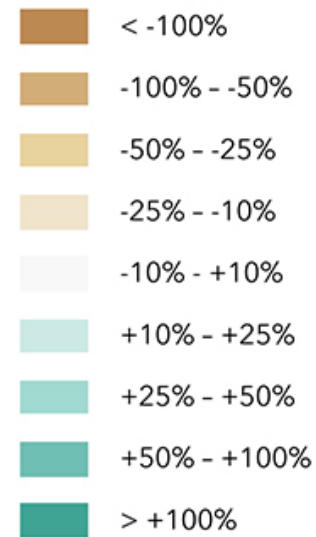
VMT modeled using multimodal accessibility and other factors

<https://www.slc.gsa.gov/slc/>

PROJECT ALTERNATIVES AND PRIORITIZATION – METRO TWIN CITIES



Change in number of jobs within 30 minutes by transit



Accessibility is being used to identify winners (and losers) of transit alternatives

PROJECT ALTERNATIVES AND PRIORITIZATION – VIRGINIA DOT

HB2 QUICK GUIDE



What are the factor areas and measures?

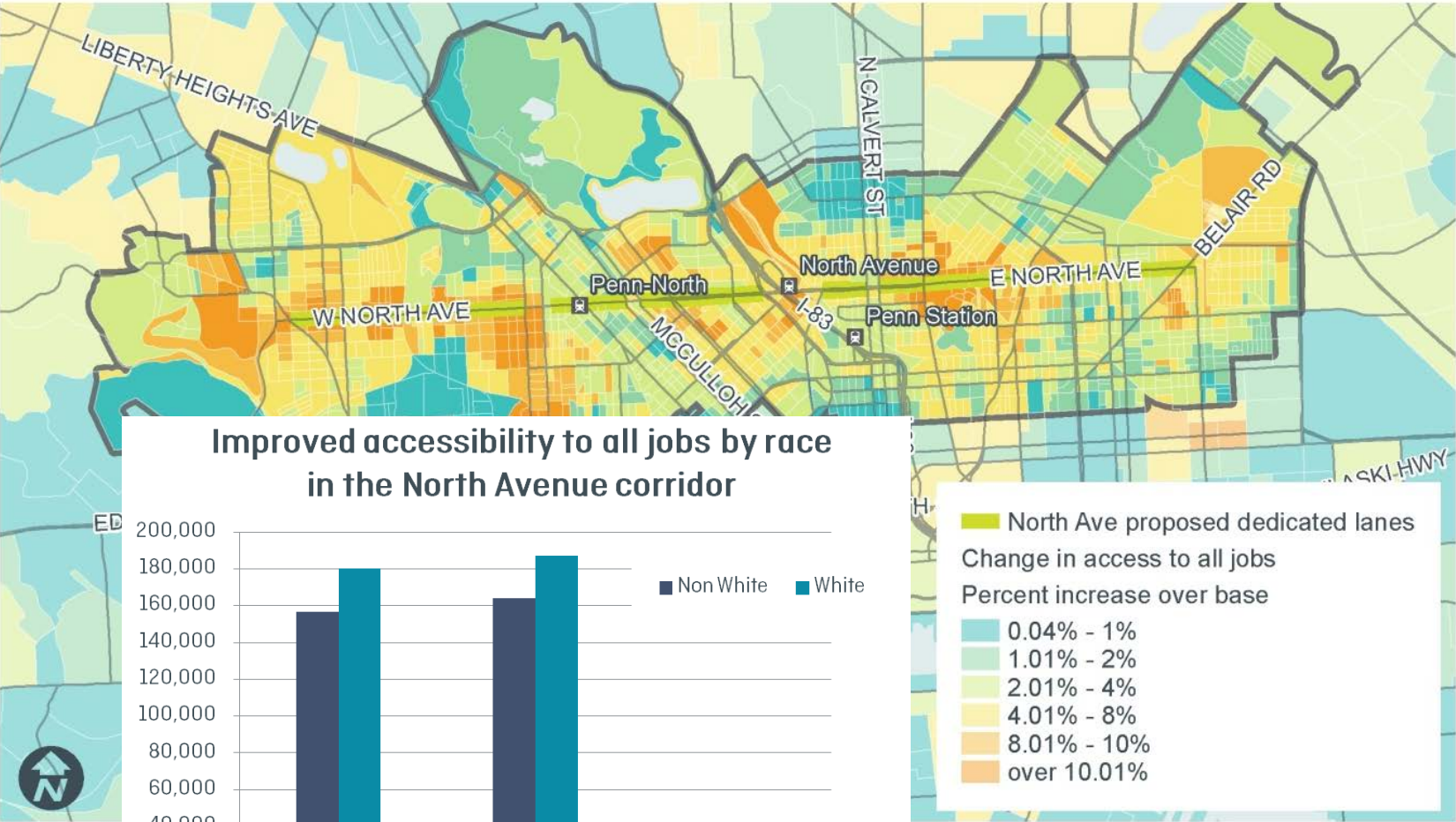
(See Policy Guide Section 3.0 – 3.6 and Appendices 7.0 – 12.0)

There are six factors required by HB2 legislation. Each factor is made up of several measures that quantify the benefit of a given project for that factor area. The factors with their respective measures are:

Safety	<ul style="list-style-type: none">◆ Number of fatal and severe injury crashes◆ Rate of fatal and severe injury crashes
Congestion Mitigation	<ul style="list-style-type: none">◆ Person throughput◆ Person hours of delay
Accessibility	<ul style="list-style-type: none">◆ Access to jobs◆ Access to jobs for disadvantaged populations◆ Access to multimodal choices
Environmental Quality	<ul style="list-style-type: none">◆ Air quality and energy environmental effect◆ Impact to natural and cultural resources
Economic Development	<ul style="list-style-type: none">◆ Project support for economic development◆ Intermodal access and efficiency◆ Travel time reliability
Land Use (Only required for MPOs with populations of more than 200,000)	<ul style="list-style-type: none">◆ Land use policy consistency

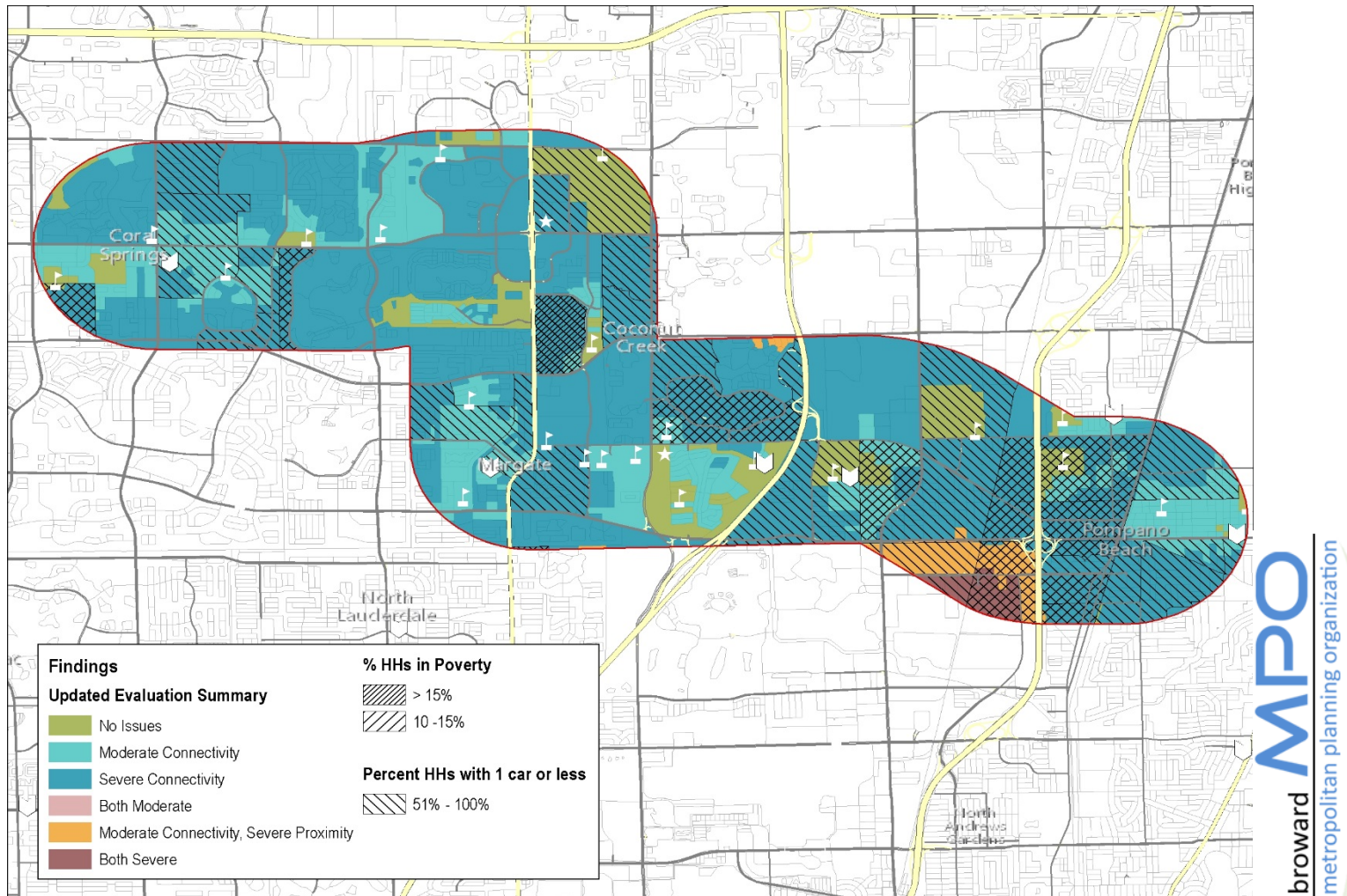
Accessibility is being used as a measure in a statewide project prioritization process

EQUITY ANALYSIS – MARYLAND MTA & CITY OF BALTIMORE



Accessibility by population group has been used to support of Ladders of Opportunity mission

MULTIMODAL PLACEMAKING



Accessibility can help answer placemaking questions: “do we have a land use problem or a transportation problem?”

5

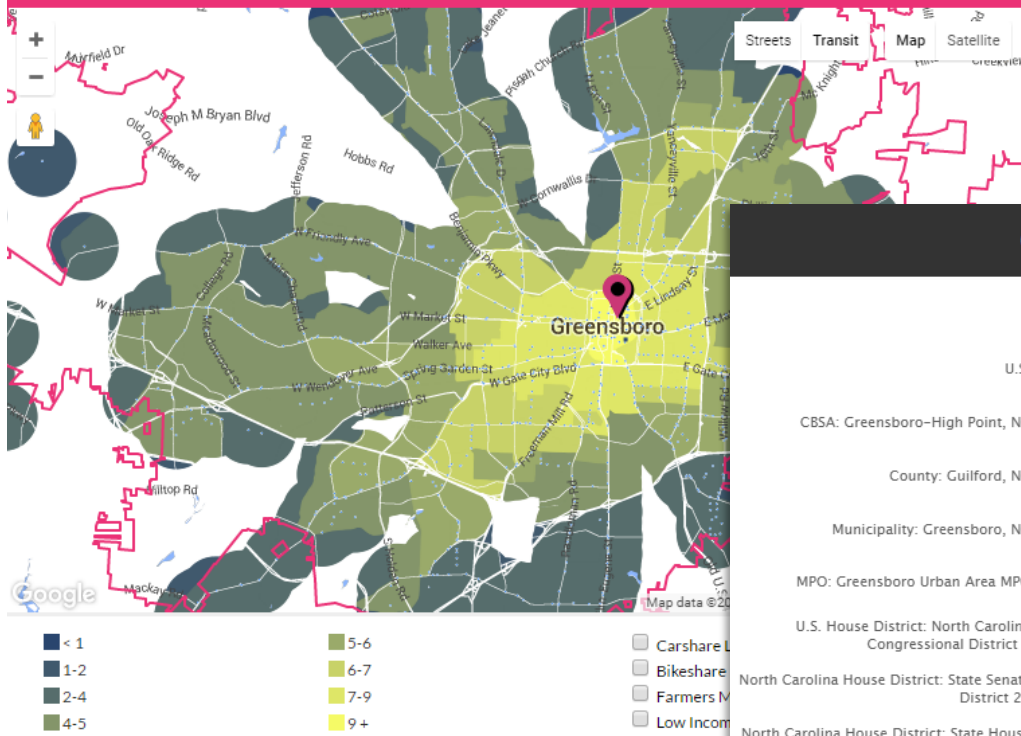
HOW TO GET STARTED

RESOURCES

3.9

Municipality: Greensboro, NC

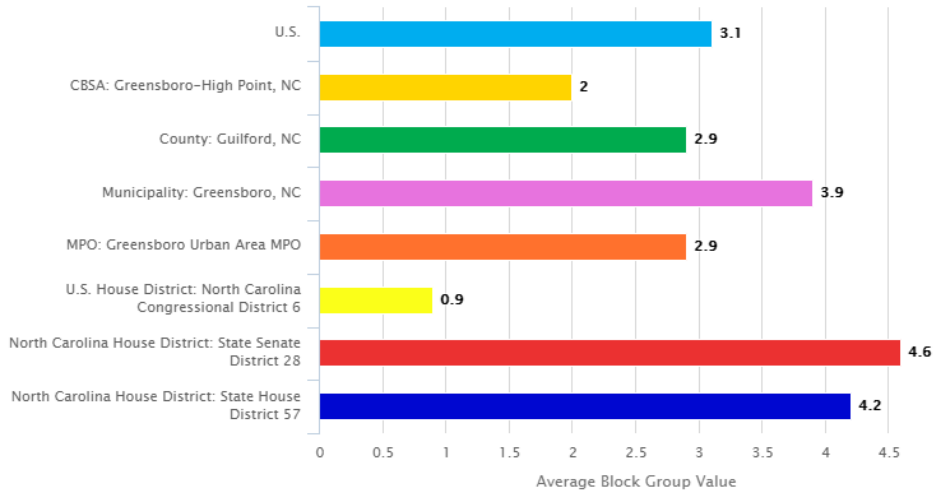
Overall transit score that looks at connectivity, access to jobs, and frequency of service.



alltransit.cnt.org

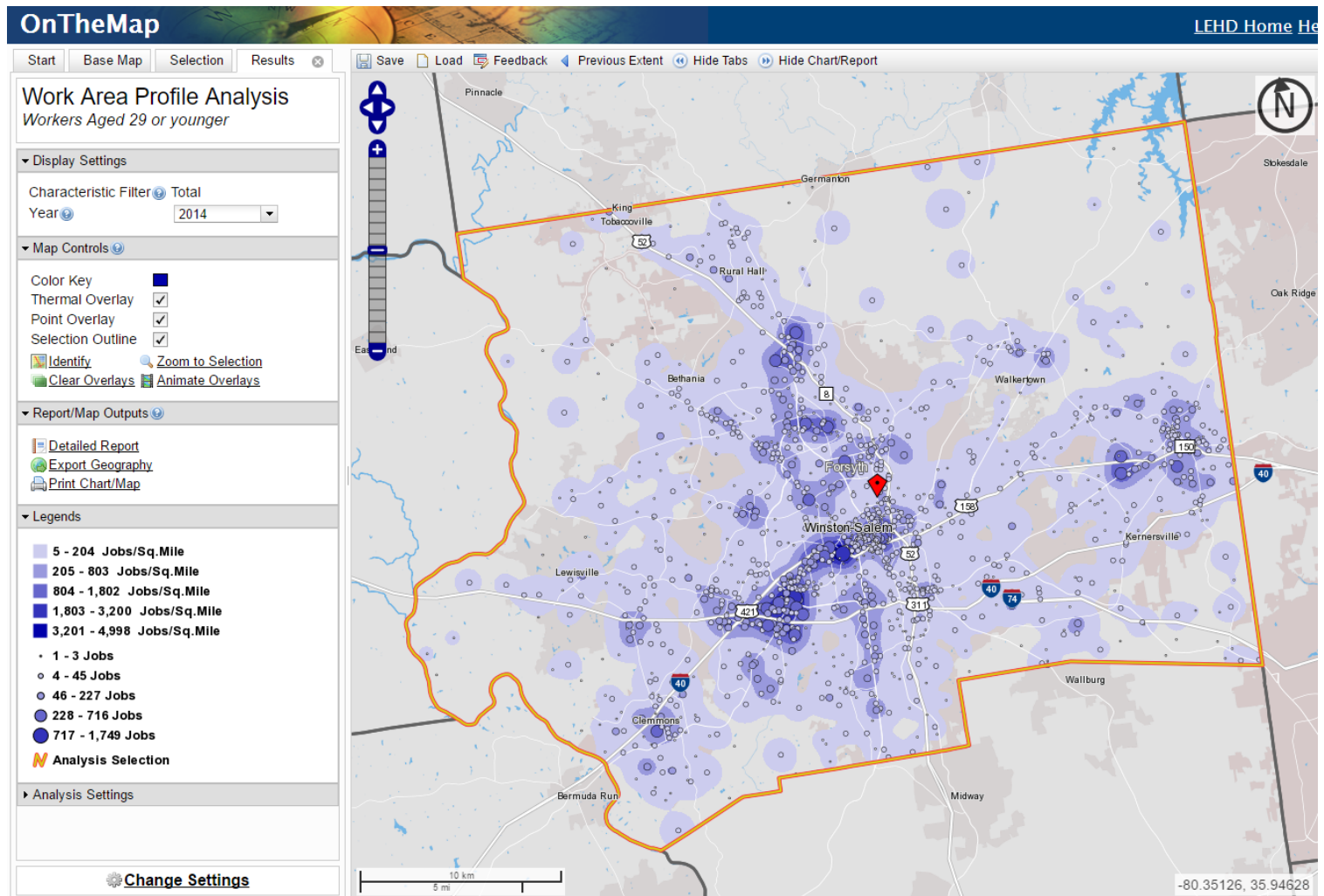
Comparison Snapshot

Transit Performance Score (0-10)



- [Accessibility Observatory \(Univ. of MN\)](#)
- [AllTransit \(CNT\)](#)
- [Smart Location Database \(EPA\)](#)
- [WalkScore](#)

CUSTOM/FUTURE ANALYSIS

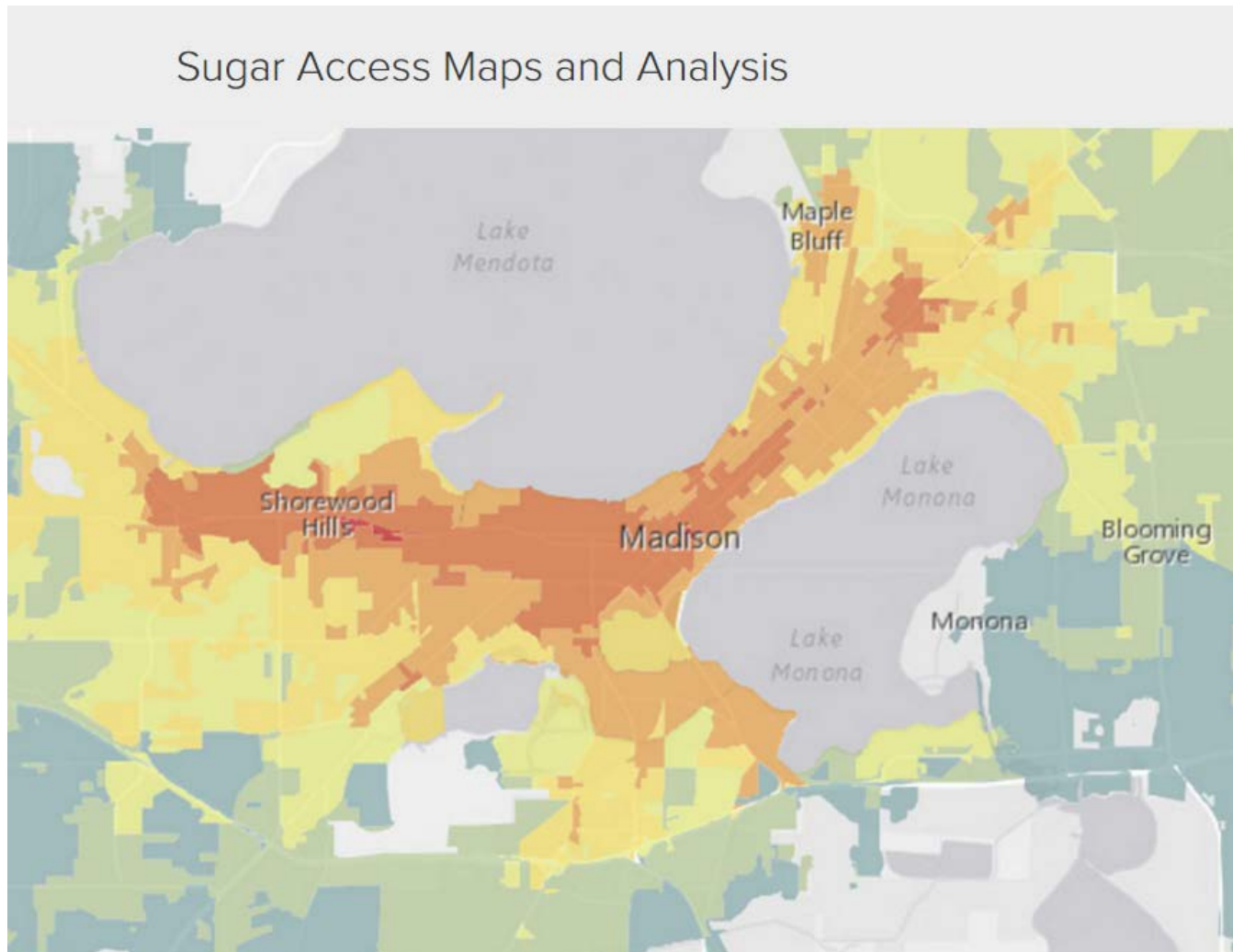


<http://onthemap.ces.census.gov>

DATA

- Opportunities
 - LEHD
 - InfoUSA (or similar)
- Travel networks
 - OpenStreetMap
 - HERE, TomTom
 - Model networks
 - GTFS

CUSTOM/FUTURE ANALYSIS



<http://www.citilabs.com/software/sugar/sugar-access>

TOOLS

- GIS
 - ArcGIS, PostGIS
- Path solving software
 - Network Analyst
 - Pgrouting
 - OpenTripPlanner
 - TransCAD, Cube
- Sugar Access

SUMMARY

Accessibility is a simple but powerful concept that provides insight into the interactions of travel behavior, transportation systems, and land development.

